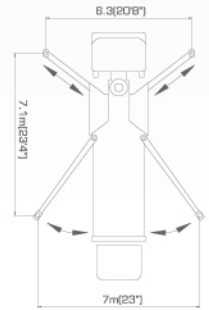
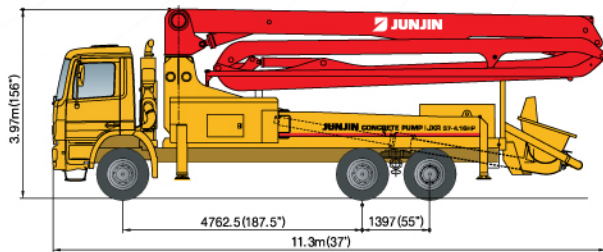


JUNJIN CONCRETE PUMPS

JXR 37-4.16HP



DIMENSIONS

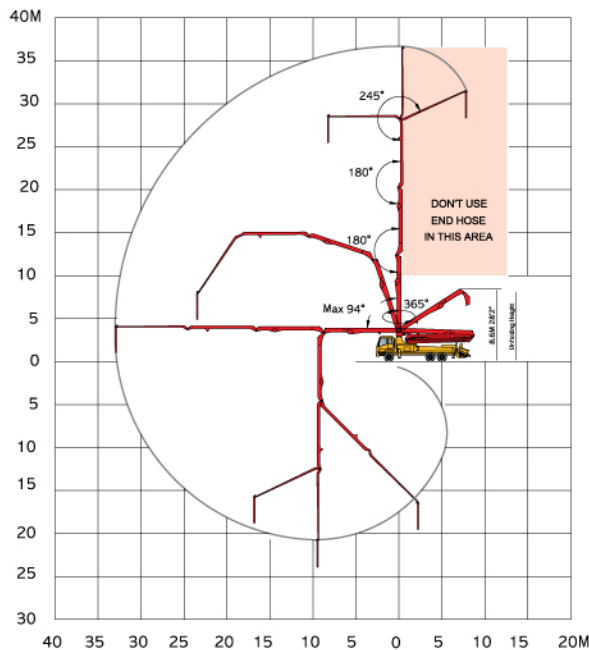


SPECIFICATION

GENERAL

Pipe size(ID) metric	125mm(5")
Elbow	All standard size
Coupling size	140mm(5.5")
End hose length	3m(9'8")
Boom control valve	Proportional(BY HAWE)
Proportional radio remote control	Standard
Wire remote control	Standard
Vibrator	Option
Water pump	Rust proof hydraulic power
	20bar (290psi)
Water tank	600L (158G)

WORKING DIAGRAM



PUMP

Output	rod side	164m ³ /h (213yd ³ /h)
	piston side	102m ³ /h (133yd ³ /h)
Pressure	rod side	72bar(1044psi)
	piston side	115bar(1668psi)
Concrete cylinder diameter		230mm(9")
Concrete cylinder type		Hard chromed
Stroke length		2100 mm (83")
S-tube size		8" x 7"
Main oil pump		Rexroth hydromatik
		A11VO260
Hydraulic system pressure		350bar(5075psi)
Lube system (hopper)		Automatic
Switching system		Hydraulic
Hopper capacity		Easy clean 600 L (158 G)
No. of strokes/min		29
Output control range		20(26)~158 m ³ /h(206yd ³ /h)

BOOM

Vertical	reach	37m(121'4")
Horizontal	reach	33m(108'3")
Unfolding	height	8.6m(28'2")
1st section	length	8.7m(28'6")
2nd section	length	7.9m(25'9")
3rd section	length	8.0m(26'3")
4th section	length	8.4m(27'6")

OUTRIGGER

X-Style		
Front spread		6.3m (20'8")
Rear spread		7m (23')

JUNJIN RESERVES THE RIGHT TO MAKE CHANGES TO THESE SPECIFICATION